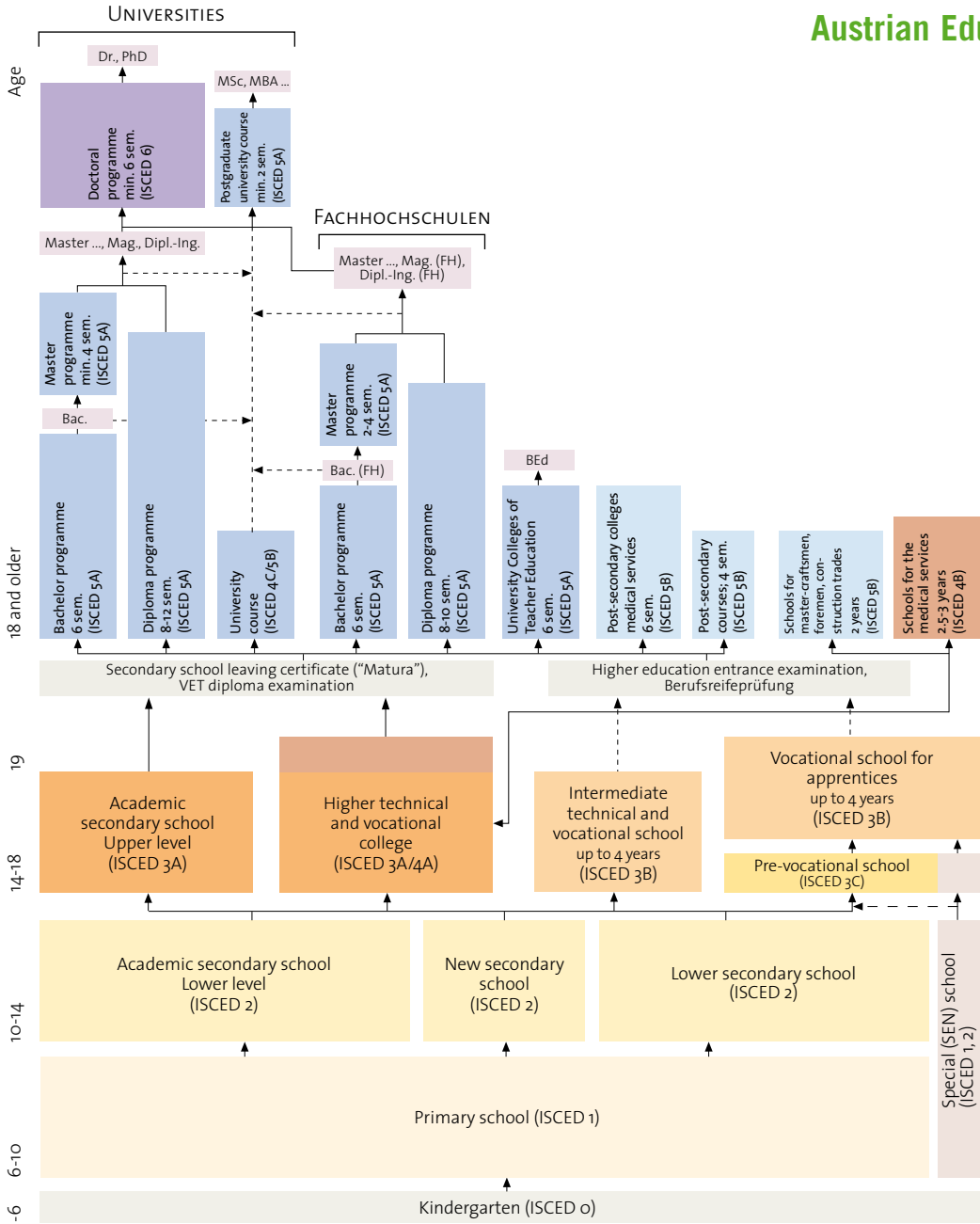


Statistical Guide

2009

Key facts and figures
about schools and
adult education in Austria

Austrian Educational System



ISCED: International Standard Classification of Education (UNESCO)

Statistical Guide

2009

Key facts and figures
about schools and
adult education in Austria

Note on sources:

Unless other sources are indicated, data are based on a survey conducted in accordance with the Education Documentation Act and have been provided by Statistics Austria.

You are kindly requested to inform us by e-mail if your postal address has changed.
Your comments and suggestions for future editions are welcome as well.

E-mail to: statistik@bmukk.gv.at

Postal Address:

Federal Ministry for Education, the Arts and Culture
Division IT/1
Education Statistics and Information Technology
Minoritenplatz 5, 1014 Vienna, Austria

Closing date for this issue: December 18, 2009

Published and produced by:

Federal Ministry for Education, the Arts and Culture (BMUKK)
Minoritenplatz 5, 1014 Vienna, Austria

Editors:

Susanne Archam, Maria Brauchart, Thomas Dorner,
Michael Lückl, Mark Némét, Brigitte Roubal, Josef Steiner

All rights reserved.

No part of the present publication may be reproduced without quotation of source.

Cover design: Skibar Grafik Design

English translation: Wolf Zemina

Composition: P. Sachartschenko & S. Spreitzer OEG

Printed by: Berger, Horn

Preface

Education is a lifelong development process. We want an educational system that does not leave anybody behind, i.e. an educational system that promotes all participants in the best possible way according to their interests and talents.

The “Statistical Guide 2009” provides the public with an insight into the educational system, adult education and educational attainment in Austria. In addition to data on pupils and adult education the publication for the first time also presents statistics on University Colleges of Teacher Education: numbers of students, new entrants and graduates at the individual institutions.

The “Statistical Guide 2009” continues the bilingual series of publications initiated by the Federal Ministry for Education, the Arts and Culture with updated figures.

I hope that all those interested in educational issues will enjoy this publication.



A handwritten signature in cursive script, reading "Claudia Schmied". The signature is written in black ink and is positioned above the printed name and title.

Dr. Claudia Schmied
Federal Minister for Education, the Arts and Culture

Content

Table 1:	Key data on education and population statistics, 2000/01, 2007/08 and 2008/09	7
Table 2:	Demographic development, population aged 6 to 18 years, 1984 – 2034	8
	<i>with chart</i>	
Table 3:	Educational attainment of the population: 25 to 64 year old resident population by highest level of education attained, 2008.	9
Table 4:	Schools, classes and students by type of school and federal province, school year 2008/09.	10
	<i>with charts</i>	
Table 5:	Students with other than Austrian citizenship by type of school and federal province, school year 2008/09	16
Table 6:	Students with non-German mother tongue by type of school and federal province, school year 2008/09	17
Table 7:	Proportions of school types, distribution of all pupils/students by type of school, school year 2008/09.	19
	<i>with charts</i>	
Table 7a:	Proportions of school types, distribution of male pupils/students by type of school, school year 2008/09.	20
Table 7b:	Proportions of school types, distribution of female pupils/students by type of school, school year 2008/09	21
Table 8:	Class sizes, school year 2008/09.	23
	<i>with charts</i>	
Table 9:	Teaching staff by school type and federal province, school year 2008/09	24
Table 10:	Recipients of student support and/or accommodation grants by support category, type of school and federal province, school year 2007/08.	26
Table 11:	Recipients of student support and/or accommodation grants: average (annual) amount of support in € by support category, type of school and federal province, school year 2007/08.	27
Table 12:	Students in graduation classes of upper secondary schools by school type and gender, graduation years 1990, 2000, 2005, 2008 and 2009	28
Table 13:	University Colleges of Teacher Education: students and new entrants, winter term 2008/09.	29
Table 14:	University Colleges of Teacher Education: new entrants and graduates, academic year 2007/08	30
Table 15:	University Colleges of Teacher Education: students and new entrants, winter term 2007/08.	31
Table 16:	Reference levels of European average performance (<i>Benchmarks</i>) in education and training, 2008.	32
Table 17:	Adult education: number of events and participation, calendar year 2008 and academic year 2007/08, respectively.	33
Table 18:	Adults' participation in lifelong learning: Population of 15 years and older by participation in training and continuing education; type, purpose and hours by age and gender, 2008.	34
Table 19:	Labour force aged 25 to 64 years participating in continuing education by federal province and purpose of continuing education, 2008 ..	35

Table 1:
Key data on education and population statistics, 2000/01, 2007/08 and 2008/09

	2008/09		2007/08		2000/01	
	All	of which females %	All	of which females %	All	of which females %
Children in kindergartens ¹	210,043	49.3	205,636	48.9	208,930	49.1
Children in 1 st classes of primary schools	81,675	48.4	82,128	47.9	97,040	48.4
Students in grade 9	98,854	50.8	100,690	50.5	94,134	51.2
Students in graduation (Matura) classes of secondary schools ²	44,510	57.1	43,612	57.1	39,302	56.7
of which in VET courses	1,729	75.1	1,744	73.9	1,482	69.9
New entrants at University Colleges of Teacher Education ^{3,4}	2,988	75.9	2,502	79.7	3,175	76.3
New entrants at universities and Fachhochschulen ⁵	52,532	53.7	48,668	53.9	34,481	53.5
Students at University Colleges of Teacher Education ^{3,6}	7,928	79.4	6,779	79.9	7,506	77.1
Students at universities and Fachhochschulen ⁶	262,191	52.8	252,888	52.7	239,691	50.2
Graduates from University Colleges of Teacher Education ^{3,7}	1,053	75.9	1,826	75.5	1,657	79.0
Graduates from universities and Fachhochschulen ⁷	26,646	55.1	24,864	53.6	17,051	49.4
Live births ⁸	77,752	48.4	76,250	48.9	78,268	48.7
Resident population ⁸	8,336,549	51.3	8,300,954	51.3	8,011,566	51.6
Resident population with completed secondary education ^{8,9}	5,089,200	47.5	4,971,400	47.0	4,566,800	46.8
Proportion <i>in</i> % of age cohort						
Children in kindergartens ¹	86.5	87.6	84.9	85.2	77.6	n.a.
Graduates from (upper) secondary schools ¹⁰	42.8	49.3	42.1	48.6	38.3	43.9
Resident population with completed secondary education ^{8,11}	82.5	77.8	81.5	76.1	77.4	71.1
Proportion of higher education graduates ^{8,9,12}	15.1	16.4	14.8	15.8	8.1	7.2

1 Children aged 3 to 5 years (age as at September 1) in public and private nurseries, kindergartens, day-homes and mixed-age child care institutions.

2 Students in graduation classes of secondary schools with Matura school leaving certificate (higher education entrance qualification), school year; including VET courses.

3 2000/01: post-secondary colleges for teacher training.

4 2008/09: winter term; 2007/08 and 2000/01: academic year.

5 New entrants in university degree programmes, Fachhochschule degree programmes and at private universities; respective academic year.

6 Total of all students in degree programmes; winter terms.

7 First degrees of students (diploma, bachelor); respective academic year.

8 Calendar years 2008, 2007 and 2000; resident population: annual average.

9 Microcensus annual average.

10 As 2, without VET courses, in relation to the average of the corresponding age group (arithmetic mean of the 18 to 19 year old resident population).

11 Proportion of persons aged 25 to 64 years with at least completed secondary education in relation to the resident population of the same age group.

12 Proportion of persons aged 25 to 64 years with higher education degree (university and Fachhochschule degree programmes;

from 2008 including graduates from University Colleges of Teacher Education) in relation to the labour force of the same age group.

n.a. – Not available.

Source: Statistics Austria

Table 2:
Demographic development, population aged 6 to 18 years, 1984 – 2034¹

	6 – 9 years	10 – 13 years	14 – 18 years
1984	348,633	407,290	623,119
1989	368,211	344,342	507,530
1994	370,651	384,775	456,085
1999	384,039	374,253	483,073
2004	358,902	391,513	482,806
2009	326,731	357,033	495,731
2014	326,888	334,088	454,242
2019	328,377	333,246	432,544
2024	338,149	337,118	429,653
2029	344,213	346,808	435,728
2034	343,940	351,649	447,456

¹ Resident population, annual average; from 2009: forecast.

Source: Statistics Austria

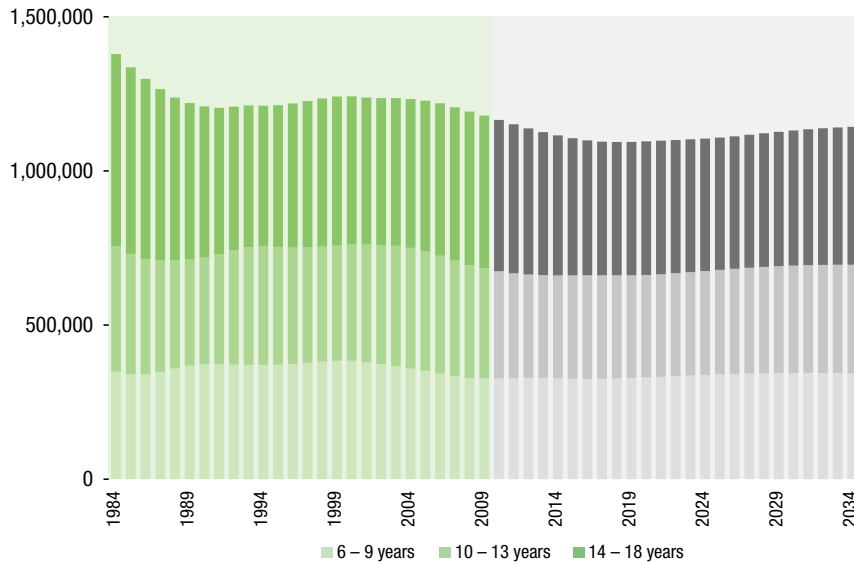


Table 3:
Educational attainment of the population:
25 to 64 year old resident population by highest level of education attained, 2008

	Total		Compulsory school		Apprenticeship		Intermediate VET school (without vocational school for apprentices)		Upper secondary school with „Matura“ ¹ exam		University, university college and other HE institutions	
	Thousands	Pro-portion %	Thousands	Pro-portion %	Thousands	Pro-portion %	Thousands	Pro-portion %	Thousands	Pro-portion %	Thousands	Pro-portion %
All												
Total	4,583.7	100.0	798.2	17.4	1,870.4	40.8	633.5	13.8	669.9	14.6	611.6	13.3
25 to 34 years	1,080.1	100.0	125.7	11.6	416.9	38.6	121.0	11.2	241.7	22.4	174.8	16.2
35 to 44 years	1,353.7	100.0	190.5	14.1	569.4	42.1	186.1	13.8	215.0	15.9	192.6	14.2
45 to 54 years	1,222.0	100.0	232.2	19.0	507.2	41.5	194.8	15.9	137.3	11.2	150.5	12.3
55 to 64 years	928.0	100.0	249.8	26.9	377.0	40.6	131.6	14.2	75.8	8.2	93.7	10.1
Females												
Females total	2,302.0	100.0	512.4	22.3	698.6	30.3	430.0	18.7	342.0	14.9	318.9	13.9
25 to 34 years	540.1	100.0	70.5	13.1	157.5	29.2	80.6	14.9	131.3	24.3	100.1	18.5
35 to 44 years	673.7	100.0	119.2	17.7	216.1	32.1	124.2	18.4	112.9	16.8	101.4	15.0
45 to 54 years	611.1	100.0	155.6	25.5	181.5	29.7	133.8	21.9	64.3	10.5	75.9	12.4
55 to 64 years	477.1	100.0	167.1	35.0	143.5	30.1	91.5	19.2	33.5	7.0	41.5	8.7
Males												
Males total	2,281.7	100.0	285.8	12.5	1,171.8	51.4	203.5	8.9	327.8	14.4	292.8	12.8
25 to 34 years	540.0	100.0	55.2	10.2	259.3	48.0	40.4	7.5	110.4	20.4	74.7	13.8
35 to 44 years	680.0	100.0	71.3	10.5	353.3	52.0	62.0	9.1	102.1	15.0	91.3	13.4
45 to 54 years	610.9	100.0	76.6	12.5	325.7	53.3	61.0	10.0	73.0	11.9	74.6	12.2
55 to 64 years	450.9	100.0	82.7	18.3	233.5	51.8	40.1	8.9	42.3	9.4	52.2	11.6

1 Higher education (HE) entrance qualification.

Source: Statistics Austria – Microcensus

Table 4:
Schools, classes and students by type of school and federal province, school year 2008/09

Type of school ¹	Austria, total				Burgenland			
	Schools	Classes	Students		Schools	Classes	Students	
			all	of which female			all	of which female
All mainstream schools	5,795	54,656	1,151,826	551,126	283	1,766	35,372	17,204
General schools, total	5,117	40,023	812,245	398,556	258	1,296	24,368	11,941
Compulsory schools, total	4,780	31,473	604,017	286,324	247	1,026	18,227	8,689
Primary schools	3,207	17,613	332,210	160,829	192	598	10,132	4,907
Lower secondary schools	1,163	11,079	237,989	113,074	40	355	7,327	3,539
Special (SEN) schools and classes	325	1,796	13,170	4,720	11	46	273	104
Pre-vocational schools	265	985	20,648	7,701	12	27	495	139
New secondary schools	67	166	3,441	1,664	9	19	355	168
Academic secondary schools, total	337	8,384	204,787	110,568	11	251	5,786	3,084
Academic secondary schools, full 8 / 9 year cycle	270	7,176	176,508	93,455	8	193	4,476	2,345
Academic secondary schools, lower level	270	4,461	116,384	60,222	8	132	3,251	1,673
Academic secondary schools, upper level	261	2,715	60,124	33,233	7	61	1,225	672
Academic secondary schools, separate upper level	100	1,035	23,926	14,702	7	58	1,310	739
Academic secondary schools for people in employment	8	140	3,687	2,061	-	-	-	-
Add-on secondary schools	4	33	666	350	-	-	-	-
Technical and vocational schools, post-secondary colleges, total	641	14,149	326,913	142,700	24	455	10,605	4,879
Vocational schools for apprentices, total	160	6,438	140,373	48,500	4	120	2,510	616
Vocational schools for apprentices	151	6,387	139,462	48,011	4	120	2,510	616
Vocational schools for agriculture and forestry for apprentices	9	51	911	489	-	-	-	-
Intermediate technical and vocational schools, total	426	2,208	50,767	25,166	20	82	1,820	1,029
Crafts, technical and arts schools	133	747	16,321	3,269	5	21	453	131
Schools of business administration	107	500	11,318	6,578	8	27	615	354
Schools of management and the service industries	87	379	8,605	7,402	5	18	431	368
Schools for social professions	15	57	1,489	1,388	-	-	-	-
Schools for agriculture and forestry	99	525	13,034	6,529	3	16	321	176
Higher technical and vocational colleges, total	303	5,502	135,750	69,018	14	253	6,275	3,234
Crafts, technical and arts colleges	110	2,470	60,683	15,518	5	105	2,648	636
Colleges of business administration	109	1,795	43,129	26,271	7	99	2,321	1,379
Colleges of management and the service industries	87	1,110	28,274	25,694	4	49	1,306	1,219
Colleges of agriculture and forestry	12	127	3,664	1,535	-	-	-	-
Post-secondary vocational colleges	1	1	23	16	-	-	-	-
Institutions for teacher training, total	38	484	12,668	9,870	1	15	399	384
Intermediate schools for teacher training	4	128	3,208	861	-	-	-	-
Higher colleges for teacher training	34	356	9,460	9,009	1	15	399	384

¹ Schools for the medical services and schools with a statute of their own are not included. Intermediate schools for teacher training: figures from previous year. Schools offering several types of schooling are counted only once in sum rows.

Source: Statistics Austria – Education documentation

**Table 4 (continued):
Schools, classes and students by type of school and federal province, school year 2008/09**

Type of school ¹	Carinthia				Lower Austria			
	Schools	Classes	Students		Schools	Classes	Students	
			all	of which female			all	of which female
All mainstream schools	439	3,946	78,308	37,909	1,202	10,178	210,621	99,976
General schools, total	386	2,804	53,265	26,338	1,076	7,695	151,646	74,140
Compulsory schools, total	363	2,257	39,773	19,020	1,022	6,305	117,589	55,653
Primary schools	266	1,350	21,708	10,581	635	3,361	63,739	31,020
Lower secondary schools	73	760	16,365	7,820	264	2,241	46,204	21,852
Special (SEN) schools and classes	22	104	748	264	115	519	3,869	1,408
Pre-vocational schools	8	43	952	355	65	184	3,777	1,373
New secondary schools	4	5	127	84	-	-	-	-
Academic secondary schools, total	23	542	13,365	7,234	54	1,390	34,057	18,487
Academic secondary schools, full 8 / 9 year cycle	15	454	11,486	6,110	43	1,219	30,303	16,272
Academic secondary schools, lower level	15	290	7,832	4,080	43	806	21,147	10,995
Academic secondary schools, upper level	15	164	3,654	2,030	40	413	9,156	5,277
Academic secondary schools, separate upper level	7	72	1,541	943	14	139	3,132	1,891
Academic secondary schools for people in employment	2	16	338	181	1	3	47	5
Add-on secondary schools	-	-	-	-	3	29	575	319
Technical and vocational schools, post-secondary colleges, total	52	1,126	24,584	11,127	121	2,411	57,185	24,166
Vocational schools for apprentices, total	11	496	9,357	3,407	23	913	20,409	5,782
Vocational schools for apprentices	10	494	9,335	3,396	21	893	20,069	5,615
Vocational schools for agriculture and forestry for apprentices	1	2	22	11	2	20	340	167
Intermediate technical and vocational schools, total	36	170	3,696	1,630	85	482	11,183	5,693
Crafts, technical and arts schools	10	53	1,055	131	21	139	3,042	483
Schools of business administration	6	27	574	296	22	104	2,437	1,419
Schools of management and the service industries	8	30	649	513	20	83	1,852	1,561
Schools for social professions	2	6	123	113	6	28	790	748
Schools for agriculture and forestry	10	54	1,295	577	20	128	3,062	1,482
Higher technical and vocational colleges, total	24	460	11,531	6,090	62	1,016	25,593	12,691
Crafts, technical and arts colleges	8	183	4,600	1,095	21	431	10,611	2,350
Colleges of business administration	9	146	3,508	1,941	22	320	7,922	4,879
Colleges of management and the service industries	8	117	3,013	2,700	18	231	6,029	5,159
Colleges of agriculture and forestry	1	14	410	354	3	34	1,031	303
Post-secondary vocational colleges	-	-	-	-	-	-	-	-
Institutions for teacher training, total	1	16	459	444	6	72	1,790	1,670
Intermediate schools for teacher training	-	-	-	-	-	-	-	-
Higher colleges for teacher training	1	16	459	444	6	72	1,790	1,670

¹ Schools for the medical services and schools with a statute of their own are not included. Intermediate schools for teacher training: figures from previous year. Schools offering several types of schooling are counted only once in sum rows.

Source: Statistics Austria – Education documentation

**Table 4 (continued):
Schools, classes and students by type of school and federal province, school year 2008/09**

Type of school ¹	Upper Austria				Salzburg			
	Schools	Classes	Students		Schools	Classes	Students	
			all	of which female			all	of which female
All mainstream schools	1,041	10,037	213,091	100,778	375	3,926	80,819	38,943
General schools, total	914	7,272	145,755	71,287	324	2,738	55,683	27,302
Compulsory schools, total	866	6,042	116,408	55,067	298	2,200	42,396	20,220
Primary schools	585	3,286	60,779	29,034	187	1,194	22,699	10,959
Lower secondary schools	244	2,321	49,555	23,684	75	790	17,274	8,395
Special (SEN) schools and classes	38	218	1,440	494	25	148	987	342
Pre-vocational schools	57	217	4,634	1,855	19	68	1,436	524
New secondary schools	1	3	78	38	-	-	-	-
Academic secondary schools, total	48	1,227	29,269	16,182	26	538	13,287	7,082
Academic secondary schools, full 8 / 9 year cycle	39	1,054	25,235	13,548	19	446	11,026	5,709
Academic secondary schools, lower level	39	663	16,658	8,621	19	267	7,149	3,653
Academic secondary schools, upper level	38	391	8,577	4,927	19	179	3,877	2,056
Academic secondary schools, separate upper level	12	154	3,649	2,406	10	72	1,708	1,073
Academic secondary schools for people in employment	1	19	385	228	1	20	553	300
Add-on secondary schools	-	-	-	-	-	-	-	-
Technical and vocational schools, post-secondary colleges, total	120	2,678	64,960	27,706	49	1,168	24,645	11,163
Vocational schools for apprentices, total	28	1,268	30,339	10,159	13	572	10,645	3,886
Vocational schools for apprentices	26	1,261	30,241	10,102	12	569	10,587	3,845
Vocational schools for agriculture and forestry for apprentices	2	7	98	57	1	3	58	41
Intermediate technical and vocational schools, total	80	405	9,379	4,219	34	178	3,903	1,898
Crafts, technical and arts schools	30	157	3,645	517	10	62	1,225	269
Schools of business administration	16	64	1,365	799	8	32	661	343
Schools of management and the service industries	16	70	1,532	1,414	9	47	1,007	840
Schools for social professions	1	4	88	77	1	3	78	74
Schools for agriculture and forestry	19	110	2,749	1,412	7	34	932	372
Higher technical and vocational colleges, total	55	1,004	25,219	13,312	26	418	10,097	5,379
Crafts, technical and arts colleges	21	439	11,052	2,668	8	164	4,191	1,253
Colleges of business administration	18	310	7,578	4,714	8	141	3,197	1,830
Colleges of management and the service industries	16	235	5,970	5,598	9	102	2,368	2,202
Colleges of agriculture and forestry	2	20	619	332	1	11	341	94
Post-secondary vocational colleges	1	1	23	16	-	-	-	-
Institutions for teacher training, total	7	87	2,376	1,785	2	20	491	478
Intermediate schools for teacher training	1	28	734	189	-	-	-	-
Higher colleges for teacher training	6	59	1,642	1,596	2	20	491	478

1 Schools for the medical services and schools with a statute of their own are not included. Intermediate schools for teacher training: figures from previous year. Schools offering several types of schooling are counted only once in sum rows.

Source: Statistics Austria – Education documentation

**Table 4 (continued):
Schools, classes and students by type of school and federal province, school year 2008/09**

Type of school ¹	Styria				Tyrol			
	Schools	Classes	Students		Schools	Classes	Students	
			all	of which female			all	of which female
All mainstream schools	917	7,508	158,115	75,074	663	4,989	103,630	49,663
General schools, total	802	5,416	109,945	53,739	587	3,707	71,873	35,159
Compulsory schools, total	754	4,227	80,647	38,114	562	3,108	57,531	27,311
Primary schools	525	2,478	44,679	21,640	393	1,656	29,166	14,103
Lower secondary schools	178	1,545	32,855	15,580	109	1,159	24,746	11,926
Special (SEN) schools and classes	28	72	565	185	33	179	1,267	416
Pre-vocational schools	51	132	2,548	709	33	114	2,352	866
New secondary schools	30	65	1,373	646	-	-	-	-
Academic secondary schools, total	48	1,124	27,925	14,979	25	599	14,342	7,848
Academic secondary schools, full 8 / 9 year cycle	36	919	22,882	12,030	18	462	11,372	5,994
Academic secondary schools, lower level	36	558	14,674	7,550	18	277	7,392	3,857
Academic secondary schools, upper level	36	361	8,208	4,480	17	185	3,980	2,137
Academic secondary schools, separate upper level	15	184	4,426	2,595	10	104	2,320	1,542
Academic secondary schools for people in employment	1	21	617	354	1	29	559	281
Add-on secondary schools	-	-	-	-	1	4	91	31
Technical and vocational schools, post-secondary colleges, total	107	2,023	46,410	19,853	71	1,226	30,207	13,635
Vocational schools for apprentices, total	22	980	21,789	7,542	25	596	14,400	5,276
Vocational schools for apprentices	20	970	21,575	7,394	24	587	14,221	5,211
Vocational schools for agriculture and forestry for apprentices	2	10	214	148	1	9	179	65
Intermediate technical and vocational schools, total	76	283	6,138	3,260	39	217	5,271	2,834
Crafts, technical and arts schools	15	70	1,315	181	16	80	1,811	707
Schools of business administration	16	54	1,069	615	11	53	1,230	671
Schools of management and the service industries	10	37	749	625	6	30	782	764
Schools for social professions	3	7	171	159	-	-	-	-
Schools for agriculture and forestry	33	115	2,834	1,680	6	54	1,448	692
Higher technical and vocational colleges, total	43	760	18,483	9,051	30	413	10,536	5,525
Crafts, technical and arts colleges	10	334	8,076	1,658	15	186	4,831	1,467
Colleges of business administration	16	250	5,858	3,730	10	147	3,516	2,018
Colleges of management and the service industries	14	146	3,656	3,425	6	72	1,966	1,905
Colleges of agriculture and forestry	3	30	893	238	1	8	223	135
Post-secondary vocational colleges	-	-	-	-	-	-	-	-
Institutions for teacher training, total	8	69	1,760	1,482	5	56	1,550	869
Intermediate schools for teacher training	1	12	279	81	1	31	861	216
Higher colleges for teacher training	7	57	1,481	1,401	4	25	689	653

¹ Schools for the medical services and schools with a statute of their own are not included. Intermediate schools for teacher training: figures from previous year. Schools offering several types of schooling are counted only once in sum rows.

Source: Statistics Austria – Education documentation

**Table 4 (continued):
Schools, classes and students by type of school and federal province, school year 2008/09**

Type of school ¹	Vorarlberg				Vienna			
	Schools	Classes	Students		Schools	Classes	Students	
			all	of which female			all	of which female
All mainstream schools	280	2,813	57,361	27,733	595	9,493	214,509	103,846
General schools, total	255	2,121	41,733	20,351	515	6,974	157,977	78,299
Compulsory schools, total	242	1,723	32,168	15,298	426	4,585	99,278	46,952
Primary schools	164	941	17,091	8,278	260	2,749	62,217	30,307
Lower secondary schools	56	572	12,570	6,075	124	1,336	31,093	14,203
Special (SEN) schools and classes	18	142	1,080	402	35	368	2,941	1,105
Pre-vocational schools	10	68	1,427	543	10	132	3,027	1,337
New secondary schools	23	74	1,508	728	-	-	-	-
Academic secondary schools, total	13	324	8,057	4,325	89	2,389	58,699	31,347
Academic secondary schools, full 8 / 9 year cycle	10	252	6,402	3,270	82	2,177	53,326	28,177
Academic secondary schools, lower level	10	154	4,213	2,180	82	1,314	34,068	17,613
Academic secondary schools, upper level	10	98	2,189	1,090	79	863	19,258	10,564
Academic secondary schools, separate upper level	6	72	1,655	1,055	19	180	4,185	2,458
Academic secondary schools for people in employment	-	-	-	-	1	32	1,188	712
Add-on secondary schools	-	-	-	-	-	-	-	-
Technical and vocational schools, post-secondary colleges, total	24	680	15,317	7,072	73	2,382	53,000	23,099
Vocational schools for apprentices, total	8	364	7,477	2,670	26	1,129	23,447	9,162
Vocational schools for apprentices	8	364	7,477	2,670	26	1,129	23,447	9,162
Vocational schools for agriculture and forestry for apprentices	-	-	-	-	-	-	-	-
Intermediate technical and vocational schools, total	14	94	2,312	1,281	42	297	7,065	3,322
Crafts, technical and arts schools	6	37	852	281	20	128	2,923	569
Schools of business administration	5	24	620	416	15	115	2,747	1,665
Schools of management and the service industries	5	19	447	446	8	45	1,156	871
Schools for social professions	-	-	-	-	2	9	239	217
Schools for agriculture and forestry	1	14	393	138	-	-	-	-
Higher technical and vocational colleges, total	13	222	5,528	3,121	36	956	22,488	10,615
Crafts, technical and arts colleges	5	93	2,133	650	17	535	12,541	3,741
Colleges of business administration	5	88	2,261	1,339	14	294	6,968	4,441
Colleges of management and the service industries	4	41	1,134	1,132	8	117	2,832	2,354
Colleges of agriculture and forestry	-	-	-	-	1	10	147	79
Post-secondary vocational colleges	-	-	-	-	-	-	-	-
Institutions for teacher training, total	1	12	311	310	7	137	3,532	2,448
Intermediate schools for teacher training	-	-	-	-	1	57	1,334	375
Higher colleges for teacher training	1	12	311	310	6	80	2,198	2,073

¹ Schools for the medical services and schools with a statute of their own are not included. Intermediate schools for teacher training: figures from previous year. Schools offering several types of schooling are counted only once in sum rows.

Source: Statistics Austria – Education documentation

Charts table 4:

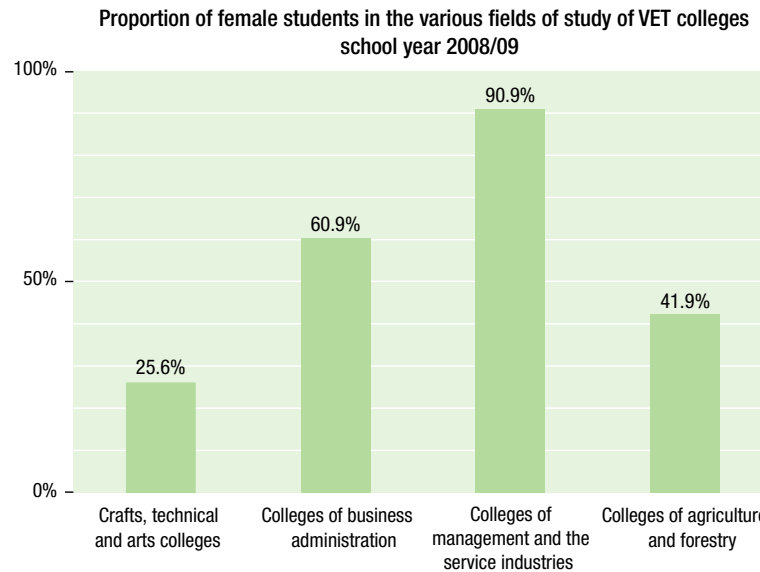
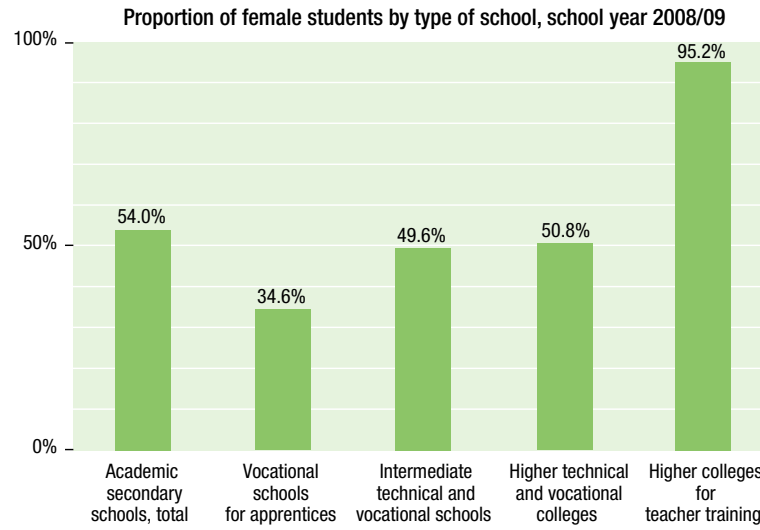


Table 5:
Students with other than Austrian citizenship by type of school and federal province, school year 2008/09

Type of school ¹	Austria, total	Burgenland	Carinthia	Lower Austria	Upper Austria	Salzburg	Styria	Tyrol	Vorarlberg	Vienna
All mainstream schools	107,736	2,122	5,457	13,459	17,304	9,524	10,157	8,409	5,993	35,311
General schools, total	86,539	1,600	4,290	10,828	13,979	7,192	8,313	6,375	4,764	29,198
Compulsory schools, total	72,770	1,293	3,632	9,617	12,701	6,015	6,588	5,593	4,041	23,290
Primary schools	37,237	649	1,845	4,906	5,990	2,975	3,745	2,714	1,951	12,462
Lower secondary schools	30,196	595	1,603	3,822	5,832	2,589	2,586	2,447	1,635	9,087
Special (SEN) schools and classes	2,456	19	68	523	251	212	57	216	262	848
Pre-vocational schools	2,881	30	116	366	628	239	200	216	193	893
New secondary schools	562	26	6	-	7	-	322	-	201	-
Academic secondary schools, total	13,207	281	652	1,211	1,271	1,177	1,403	782	522	5,908
Academic secondary schools, full 8 / 9 year cycle	11,155	228	575	1,115	1,065	918	1,119	617	383	5,135
Academic secondary schools, lower level	7,577	147	405	769	754	603	750	410	246	3,493
Academic secondary schools, upper level	3,578	81	170	346	311	315	369	207	137	1,642
Academic secondary schools, separate upper level	1,555	53	62	75	165	106	232	86	139	637
Academic secondary schools for people in employment	472	-	15	-	41	153	52	75	-	136
Add-on secondary schools	25	-	-	21	-	-	-	4	-	-
Technical and vocational schools, post-secondary colleges, total	20,931	519	1,164	2,617	3,309	2,322	1,815	1,963	1,214	6,008
Vocational schools for apprentices, total	9,036	99	363	894	1,418	1,091	624	1,163	624	2,760
Vocational schools for apprentices	9,015	99	363	887	1,416	1,089	615	1,162	624	2,760
Vocational schools for agriculture and forestry for apprentices	21	-	-	7	2	2	9	1	-	-
Intermediate technical and vocational schools, total	4,416	115	249	753	795	459	412	308	247	1,078
Crafts, technical and arts schools	1,452	18	73	228	252	144	100	120	88	429
Schools of business administration	2,191	61	134	413	389	197	206	147	117	527
Schools of management and the service industries	573	24	30	70	112	103	65	35	33	101
Schools for social professions	54	-	5	20	-	5	3	-	-	21
Schools for agriculture and forestry	146	12	7	22	42	10	38	6	9	-
Higher technical and vocational colleges, total	7,477	305	552	970	1,094	772	779	492	343	2,170
Crafts, technical and arts colleges	2,799	56	115	325	332	319	331	253	103	965
Colleges of business administration	4,065	236	334	551	641	383	412	208	212	1,088
Colleges of management and the service industries	603	13	103	89	120	70	34	30	28	116
Colleges of agriculture and forestry	10	-	-	5	1	-	2	1	-	1
Post-secondary vocational colleges	2	-	-	-	2	-	-	-	-	-
Institutions for teacher training, total	266	3	3	14	16	10	29	71	15	105
Intermediate schools for teacher training	95	-	-	-	3	-	18	59	-	15
Higher colleges for teacher training	171	3	3	14	13	10	11	12	15	90

¹ Schools for the medical services and schools with a statute of their own are not included. Intermediate schools for teacher training: figures from previous year.

Source: Statistics Austria – Education documentation

Table 6:
Students with non-German mother tongue by type of school and federal province, school year 2008/09

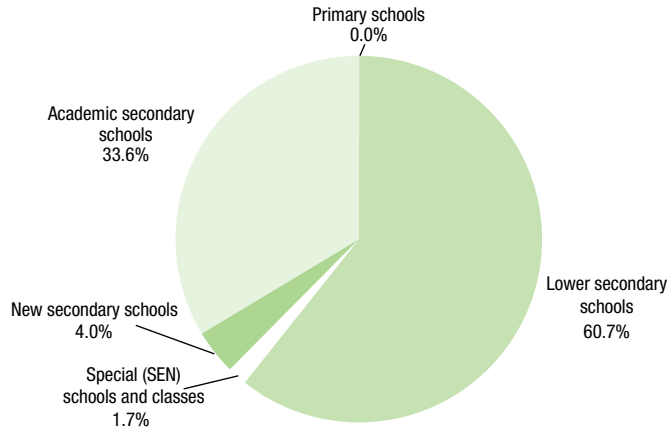
Type of school ¹	Austria, total	Burgenland	Carinthia	Lower Austria	Upper Austria	Salzburg	Styria	Tyrol	Vorarlberg	Vienna
All mainstream schools	194,348	3,925	6,816	21,863	27,791	11,761	14,499	10,616	9,936	87,141
General schools, total	158,975	3,013	5,377	17,626	23,547	9,522	12,109	8,956	8,682	70,143
Compulsory schools, total	130,964	2,395	4,309	15,657	21,279	8,355	9,392	8,105	7,689	53,783
Primary schools	74,141	1,335	2,368	8,683	11,342	4,595	5,760	4,390	4,188	31,480
Lower secondary schools	48,683	974	1,751	5,761	8,698	3,259	3,284	3,214	2,801	18,941
Special (SEN) schools and classes	3,656	31	78	717	364	236	71	265	372	1,522
Pre-vocational schools	4,484	55	112	496	875	265	277	236	328	1,840
New secondary schools	832	37	7	-	17	-	412	-	359	-
Academic secondary schools, total	27,179	581	1,061	1,969	2,251	1,167	2,305	851	634	16,360
Academic secondary schools, full 8 / 9 year cycle	23,970	482	975	1,831	2,009	999	1,859	650	517	14,648
Academic secondary schools, lower level	16,503	314	685	1,290	1,480	728	1,313	428	366	9,899
Academic secondary schools, upper level	7,467	168	290	541	529	271	546	222	151	4,749
Academic secondary schools, separate upper level	2,485	99	65	114	163	105	342	113	117	1,367
Academic secondary schools for people in employment	699	-	21	-	79	63	104	87	-	345
Add-on secondary schools	25	-	-	24	-	-	-	1	-	-
Technical and vocational schools, post-secondary colleges, total	35,078	909	1,428	4,219	4,232	2,233	2,361	1,646	1,251	16,799
Vocational schools for apprentices, total	11,510	154	227	810	1,255	799	507	421	267	7,070
Vocational schools for apprentices	11,499	154	227	810	1,251	799	500	421	267	7,070
Vocational schools for agriculture and forestry for apprentices	11	-	-	-	4	-	7	-	-	-
Intermediate technical and vocational schools, total	8,611	223	322	1,432	1,228	558	610	508	447	3,283
Crafts, technical and arts schools	2,505	37	65	454	222	99	153	83	162	1,230
Schools of business administration	4,896	143	195	842	750	321	306	338	241	1,760
Schools of management and the service industries	977	36	41	105	215	133	104	86	44	213
Schools for social professions	132	-	10	31	-	5	6	-	-	80
Schools for agriculture and forestry	101	7	11	-	41	-	41	1	-	-
Higher technical and vocational colleges, total	14,956	532	879	1,977	1,748	876	1,244	717	537	6,446
Crafts, technical and arts colleges	5,113	130	139	674	337	220	461	199	172	2,781
Colleges of business administration	8,707	366	563	1,142	1,198	578	715	464	355	3,326
Colleges of management and the service industries	1,128	36	175	156	213	78	67	54	10	339
Colleges of agriculture and forestry	8	-	2	5	-	-	1	-	-	-
Post-secondary vocational colleges	1	-	-	-	1	-	-	-	-	-
Institutions for teacher training, total	295	3	11	18	12	6	29	14	3	199
Intermediate schools for teacher training	29	-	-	-	-	-	18	3	-	8
Higher colleges for teacher training	266	3	11	18	12	6	11	11	3	191

¹ Schools for the medical services and schools with a statute of their own are not included. Intermediate schools for teacher training: figures from previous year.

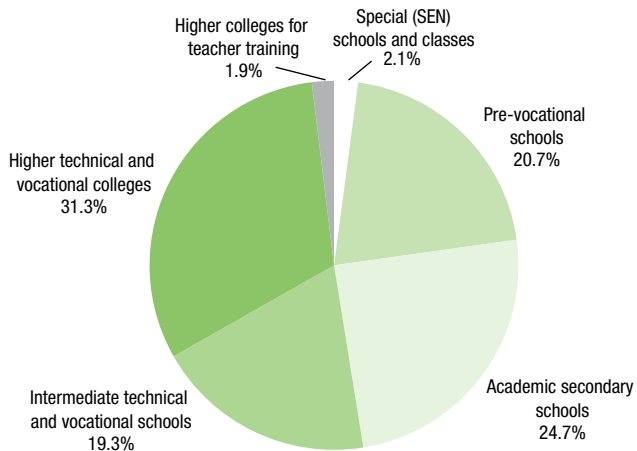
Source: Statistics Austria – Education documentation

Charts table 7:

Proportion of school types at grade 5 school year 2008/09



Proportion of school types at grade 9 school year 2008/09



Proportion of school types at grade 10 school year 2008/09

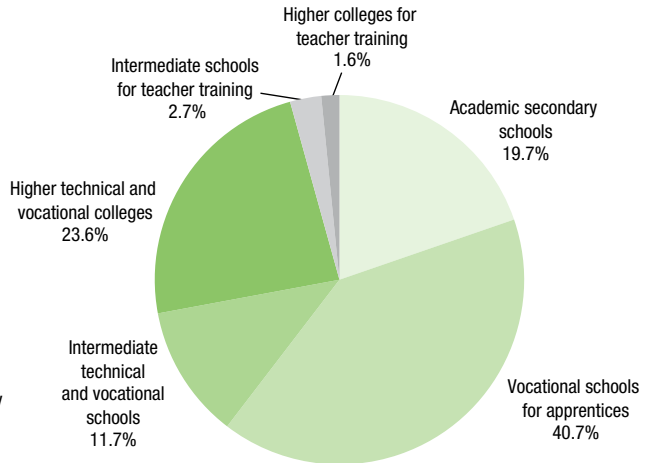


Table 7:
Proportions of school types, distribution of all pupils/students by type of school, school year 2008/09

Type of school ¹	Pupils/students, total	Primary schools	Lower secondary schools	Special (SEN) schools and classes	Pre-vocational schools	New secondary schools	Academic secondary schools	Vocational schools for apprentices	Intermediate technical and vocational schools	Higher technical and vocational colleges	Post-secondary technical and vocational colleges	Intermediate schools for teacher training	Higher colleges for teacher training
Total	1,151,826	332,210	237,989	13,170	20,648	3,441	204,787	140,373	50,767	135,750	23	3,208	9,460
<i>Proportion %</i>	<i>100.0</i>	<i>28.8</i>	<i>20.7</i>	<i>1.1</i>	<i>1.8</i>	<i>0.3</i>	<i>17.8</i>	<i>12.2</i>	<i>4.4</i>	<i>11.8</i>	<i>0.0</i>	<i>0.3</i>	<i>0.8</i>
Pre-primary level	6,994	6,907	-	87	-	-	-	-	-	-	-	-	-
<i>Proportion %</i>	<i>100.0</i>	<i>98.8</i>	-	<i>1.2</i>	-	-	-	-	-	-	-	-	-
Grade 1 – 4	329,034	325,157	-	3,877	-	-	-	-	-	-	-	-	-
<i>Proportion %</i>	<i>100.0</i>	<i>98.8</i>	-	<i>1.2</i>	-	-	-	-	-	-	-	-	-
Grade 1	82,292	81,675	-	617	-	-	-	-	-	-	-	-	-
<i>Proportion %</i>	<i>100.0</i>	<i>99.3</i>	-	<i>0.7</i>	-	-	-	-	-	-	-	-	-
Grade 4	83,239	81,965	-	1,274	-	-	-	-	-	-	-	-	-
<i>Proportion %</i>	<i>100.0</i>	<i>98.5</i>	-	<i>1.5</i>	-	-	-	-	-	-	-	-	-
Grade 5 – 8	366,088	146	237,989	7,138	202	3,441	116,703	-	469	-	-	-	-
<i>Proportion %</i>	<i>100.0</i>	<i>0.0</i>	<i>65.0</i>	<i>1.9</i>	<i>0.1</i>	<i>0.9</i>	<i>31.9</i>	-	<i>0.1</i>	-	-	-	-
Grade 5	86,691	37	52,585	1,496	-	3,441	29,132	-	-	-	-	-	-
<i>Proportion %</i>	<i>100.0</i>	<i>0.0</i>	<i>60.7</i>	<i>1.7</i>	-	<i>4.0</i>	<i>33.6</i>	-	-	-	-	-	-
Grade 8	94,742	24	63,907	2,128	25	-	28,189	-	469	-	-	-	-
<i>Proportion %</i>	<i>100.0</i>	<i>0.0</i>	<i>67.5</i>	<i>2.2</i>	<i>0.0</i>	-	<i>29.8</i>	-	<i>0.5</i>	-	-	-	-
From grade 9	449,710	-	-	2,068	20,446	-	88,084	140,373	50,298	135,750	23	3,208	9,460
<i>Proportion %</i>	<i>100.0</i>	-	-	<i>0.5</i>	<i>4.5</i>	-	<i>19.6</i>	<i>31.2</i>	<i>11.2</i>	<i>30.2</i>	<i>0.0</i>	<i>0.7</i>	<i>2.1</i>
Grade 9	98,854	-	-	2,068	20,446	-	24,404	-	19,106	30,922	-	-	1,908
<i>Proportion %</i>	<i>100.0</i>	-	-	<i>2.1</i>	<i>20.7</i>	-	<i>24.7</i>	-	<i>19.3</i>	<i>31.3</i>	-	-	<i>1.9</i>
Grade 10	110,663	-	-	-	-	-	21,819	45,025	12,922	26,127	-	3,025	1,745
<i>Proportion %</i>	<i>100.0</i>	-	-	-	-	-	<i>19.7</i>	<i>40.7</i>	<i>11.7</i>	<i>23.6</i>	-	<i>2.7</i>	<i>1.6</i>
Grade 12	88,185	-	-	-	-	-	19,728	39,056	2,399	25,529	-	-	1,473
<i>Proportion %</i>	<i>100.0</i>	-	-	-	-	-	<i>22.4</i>	<i>44.3</i>	<i>2.7</i>	<i>28.9</i>	-	-	<i>1.7</i>

¹ Schools for the medical services and schools with a statute of their own are not included. Intermediate schools for teacher training: figures from previous year.

Source: Statistics Austria – Education documentation, BMUKK calculations

Table 7a:
Proportions of school types, distribution of male pupils/students by type of school, school year 2008/09

Type of school ¹	Male pupils/students, total	Primary schools	Lower secondary schools	Special (SEN) schools and classes	Pre-vocational schools	New secondary schools	Academic secondary schools	Vocational schools for apprentices	Intermediate technical and vocational schools	Higher technical and vocational colleges	Post-secondary technical and vocational colleges	Intermediate schools for teacher training	Higher colleges for teacher training
Total	600,700	171,381	124,915	8,450	12,947	1,777	94,219	91,873	25,601	66,732	7	2,347	451
<i>Proportion %</i>	<i>100.0</i>	<i>28.5</i>	<i>20.8</i>	<i>1.4</i>	<i>2.2</i>	<i>0.3</i>	<i>15.7</i>	<i>15.3</i>	<i>4.3</i>	<i>11.1</i>	<i>0.0</i>	<i>0.4</i>	<i>0.1</i>
Pre-primary level	4,349	4,295	-	54	-	-	-	-	-	-	-	-	-
<i>Proportion %</i>	<i>100.0</i>	<i>98.8</i>	<i>-</i>	<i>1.2</i>	<i>-</i>	<i>-</i>	<i>-</i>	<i>-</i>	<i>-</i>	<i>-</i>	<i>-</i>	<i>-</i>	<i>-</i>
Grade 1 – 4	169,546	167,010	-	2,536	-	-	-	-	-	-	-	-	-
<i>Proportion %</i>	<i>100.0</i>	<i>98.5</i>	<i>-</i>	<i>1.5</i>	<i>-</i>	<i>-</i>	<i>-</i>	<i>-</i>	<i>-</i>	<i>-</i>	<i>-</i>	<i>-</i>	<i>-</i>
Grade 1	42,518	42,113	-	405	-	-	-	-	-	-	-	-	-
<i>Proportion %</i>	<i>100.0</i>	<i>99.0</i>	<i>-</i>	<i>1.0</i>	<i>-</i>	<i>-</i>	<i>-</i>	<i>-</i>	<i>-</i>	<i>-</i>	<i>-</i>	<i>-</i>	<i>-</i>
Grade 4	42,641	41,807	-	834	-	-	-	-	-	-	-	-	-
<i>Proportion %</i>	<i>100.0</i>	<i>98.0</i>	<i>-</i>	<i>2.0</i>	<i>-</i>	<i>-</i>	<i>-</i>	<i>-</i>	<i>-</i>	<i>-</i>	<i>-</i>	<i>-</i>	<i>-</i>
Grade 5 – 8	188,238	76	124,915	4,606	151	1,777	56,324	-	389	-	-	-	-
<i>Proportion %</i>	<i>100.0</i>	<i>0.0</i>	<i>66.4</i>	<i>2.4</i>	<i>0.1</i>	<i>0.9</i>	<i>29.9</i>	<i>-</i>	<i>0.2</i>	<i>-</i>	<i>-</i>	<i>-</i>	<i>-</i>
Grade 5	44,727	20	27,838	933	-	1,777	14,159	-	-	-	-	-	-
<i>Proportion %</i>	<i>100.0</i>	<i>0.0</i>	<i>62.2</i>	<i>2.1</i>	<i>-</i>	<i>4.0</i>	<i>31.7</i>	<i>-</i>	<i>-</i>	<i>-</i>	<i>-</i>	<i>-</i>	<i>-</i>
Grade 8	48,674	13	33,412	1,341	17	-	13,502	-	389	-	-	-	-
<i>Proportion %</i>	<i>100.0</i>	<i>0.0</i>	<i>68.6</i>	<i>2.8</i>	<i>0.0</i>	<i>-</i>	<i>27.7</i>	<i>-</i>	<i>0.8</i>	<i>-</i>	<i>-</i>	<i>-</i>	<i>-</i>
From grade 9	238,567	-	-	1,254	12,796	-	37,895	91,873	25,212	66,732	7	2,347	451
<i>Proportion %</i>	<i>100.0</i>	<i>-</i>	<i>-</i>	<i>0.5</i>	<i>5.4</i>	<i>-</i>	<i>15.9</i>	<i>38.5</i>	<i>10.6</i>	<i>28.0</i>	<i>0.0</i>	<i>1.0</i>	<i>0.2</i>
Grade 9	48,629	-	-	1,254	12,796	-	10,607	-	8,480	15,408	-	-	84
<i>Proportion %</i>	<i>100.0</i>	<i>-</i>	<i>-</i>	<i>2.6</i>	<i>26.3</i>	<i>-</i>	<i>21.8</i>	<i>-</i>	<i>17.4</i>	<i>31.7</i>	<i>-</i>	<i>-</i>	<i>0.2</i>
Grade 10	58,634	-	-	-	-	-	9,411	28,497	5,684	12,747	-	2,210	85
<i>Proportion %</i>	<i>100.0</i>	<i>-</i>	<i>-</i>	<i>-</i>	<i>-</i>	<i>-</i>	<i>16.1</i>	<i>48.6</i>	<i>9.7</i>	<i>21.7</i>	<i>-</i>	<i>3.8</i>	<i>0.1</i>
Grade 12	47,300	-	-	-	-	-	8,243	24,555	1,863	12,585	-	-	54
<i>Proportion %</i>	<i>100.0</i>	<i>-</i>	<i>-</i>	<i>-</i>	<i>-</i>	<i>-</i>	<i>17.4</i>	<i>51.9</i>	<i>3.9</i>	<i>26.6</i>	<i>-</i>	<i>-</i>	<i>0.1</i>

¹ Schools for the medical services and schools with a statute of their own are not included. Intermediate schools for teacher training: figures from previous year.

Source: Statistics Austria – Education documentation, BMUKK calculations

Table 7b:
Proportions of school types, distribution of female pupils/students by type of school, school year 2008/09

Type of school ¹	Female pupils/students, total	Primary schools	Lower secondary schools	Special (SEN) schools and classes	Pre-vocational schools	New secondary schools	Academic secondary schools	Vocational schools for apprentices	Intermediate technical and vocational schools	Higher technical and vocational colleges	Post-secondary technical and vocational colleges	Intermediate schools for teacher training	Higher colleges for teacher training
Total	551,126	160,829	113,074	4,720	7,701	1,664	110,568	48,500	25,166	69,018	16	861	9,009
<i>Proportion %</i>	<i>100.0</i>	<i>29.2</i>	<i>20.5</i>	<i>0.9</i>	<i>1.4</i>	<i>0.3</i>	<i>20.1</i>	<i>8.8</i>	<i>4.6</i>	<i>12.5</i>	<i>0.0</i>	<i>0.2</i>	<i>1.6</i>
Pre-primary level	2,645	2,612	-	33	-	-	-	-	-	-	-	-	-
<i>Proportion %</i>	<i>100.0</i>	<i>98.8</i>	-	<i>1.2</i>	-	-	-	-	-	-	-	-	-
Grade 1 – 4	159,488	158,147	-	1,341	-	-	-	-	-	-	-	-	-
<i>Proportion %</i>	<i>100.0</i>	<i>99.2</i>	-	<i>0.8</i>	-	-	-	-	-	-	-	-	-
Grade 1	39,774	39,562	-	212	-	-	-	-	-	-	-	-	-
<i>Proportion %</i>	<i>100.0</i>	<i>99.5</i>	-	<i>0.5</i>	-	-	-	-	-	-	-	-	-
Grade 4	40,598	40,158	-	440	-	-	-	-	-	-	-	-	-
<i>Proportion %</i>	<i>100.0</i>	<i>98.9</i>	-	<i>1.1</i>	-	-	-	-	-	-	-	-	-
Grade 5 – 8	177,850	70	113,074	2,532	51	1,664	60,379	-	80	-	-	-	-
<i>Proportion %</i>	<i>100.0</i>	<i>0.0</i>	<i>63.6</i>	<i>1.4</i>	<i>0.0</i>	<i>0.9</i>	<i>33.9</i>	-	<i>0.0</i>	-	-	-	-
Grade 5	41,964	17	24,747	563	-	1,664	14,973	-	-	-	-	-	-
<i>Proportion %</i>	<i>100.0</i>	<i>0.0</i>	<i>59.0</i>	<i>1.3</i>	-	<i>4.0</i>	<i>35.7</i>	-	-	-	-	-	-
Grade 8	46,068	11	30,495	787	8	-	14,687	-	80	-	-	-	-
<i>Proportion %</i>	<i>100.0</i>	<i>0.0</i>	<i>66.2</i>	<i>1.7</i>	<i>0.0</i>	-	<i>31.9</i>	-	<i>0.2</i>	-	-	-	-
From grade 9	211,143	-	-	814	7,650	-	50,189	48,500	25,086	69,018	16	861	9,009
<i>Proportion %</i>	<i>100.0</i>	-	-	<i>0.4</i>	<i>3.6</i>	-	<i>23.8</i>	<i>23.0</i>	<i>11.9</i>	<i>32.7</i>	<i>0.0</i>	<i>0.4</i>	<i>4.3</i>
Grade 9	50,225	-	-	814	7,650	-	13,797	-	10,626	15,514	-	-	1,824
<i>Proportion %</i>	<i>100.0</i>	-	-	<i>1.6</i>	<i>15.2</i>	-	<i>27.5</i>	-	<i>21.2</i>	<i>30.9</i>	-	-	<i>3.6</i>
Grade 10	52,029	-	-	-	-	-	12,408	16,528	7,238	13,380	-	815	1,660
<i>Proportion %</i>	<i>100.0</i>	-	-	-	-	-	<i>23.8</i>	<i>31.8</i>	<i>13.9</i>	<i>25.7</i>	-	<i>1.6</i>	<i>3.2</i>
Grade 12	40,885	-	-	-	-	-	11,485	14,501	536	12,944	-	-	1,419
<i>Proportion %</i>	<i>100.0</i>	-	-	-	-	-	<i>28.1</i>	<i>35.5</i>	<i>1.3</i>	<i>31.7</i>	-	-	<i>3.5</i>

¹ Schools for the medical services and schools with a statute of their own are not included. Intermediate schools for teacher training: figures from previous year.

Source: Statistics Austria – Education documentation, BMUKK calculations

Charts table 8:

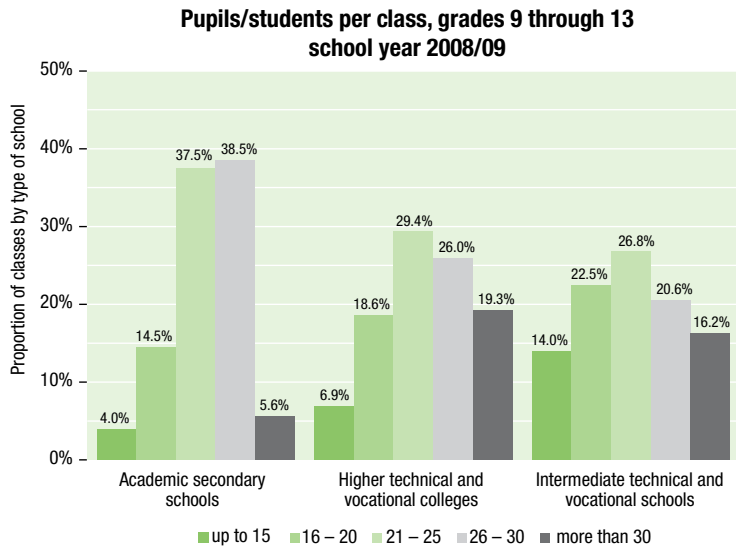
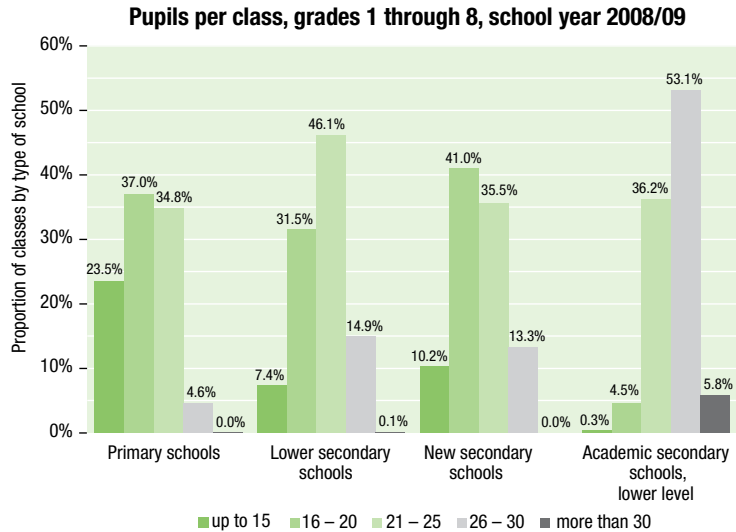


Table 8:
Class sizes, school year 2008/09

Type of school ¹	Number of classes, total	Number of classes with . . . pupils/students						Average class size
		up to 10	11 – 15	16 – 20	21 – 25	26 – 30	more than 30	
All mainstream schools²	54,528	2,724	6,211	14,797	18,957	9,661	2,178	21.1
General schools, total	40,023	2,258	4,948	11,572	15,018	5,743	484	20.3
Compulsory schools, total	31,473	2,226	4,629	10,289	11,819	2,496	14	19.2
Primary schools	17,613	547	3,600	6,513	6,136	815	2	18.9
Lower secondary schools	11,079	55	767	3,489	5,106	1,651	11	21.5
Special (SEN) schools and classes	1,796	1,618	175	2	-	1	-	6.8
Pre-vocational schools	985	6	87	285	577	29	1	21.0
New secondary schools	166	1	16	68	59	22	-	20.8
Academic secondary schools, total	8,384	31	303	1,215	3,140	3,225	470	24.4
Academic secondary schools, full 8 / 9 year cycle	7,176	19	202	951	2,747	2,925	332	24.6
Academic secondary schools, lower level	4,461	2	13	202	1,617	2,368	259	26.1
Academic secondary schools, upper level	2,715	17	189	749	1,130	557	73	22.1
Academic secondary schools, separate upper level	1,035	9	76	229	358	271	92	23.2
Academic secondary schools for people in employment	140	2	21	22	24	25	46	26.3
Add-on secondary schools	33	1	4	13	11	4	-	20.2
Technical and vocational schools, post-secondary colleges, total	14,149	464	1,260	3,190	3,843	3,776	1,616	23.1
Vocational schools for apprentices, total	6,438	303	735	1,673	1,636	1,893	198	21.8
Vocational schools for apprentices	6,387	299	725	1,646	1,631	1,890	196	21.8
Vocational schools for agriculture and forestry for apprentices	51	4	10	27	5	3	2	17.9
Intermediate technical and vocational schools, total	2,208	92	217	496	591	454	358	23.0
Crafts, technical and arts schools	747	53	101	177	172	133	111	21.9
Schools of business administration	500	13	58	118	149	79	83	22.6
Schools of management and the service industries	379	17	27	93	115	80	47	22.7
Schools for social professions	57	-	2	8	14	20	13	26.1
Schools for agriculture and forestry	525	9	29	100	141	142	104	24.8
Higher technical and vocational colleges, total	5,502	69	308	1,021	1,615	1,429	1,060	24.7
Crafts, technical and arts colleges	2,470	48	157	469	670	610	516	24.6
Colleges of business administration	1,795	14	109	384	597	418	273	24.0
Colleges of management and the service industries	1,110	6	37	161	329	365	212	25.5
Colleges of agriculture and forestry	127	1	5	7	19	36	59	28.9
Post-secondary vocational colleges	1	-	-	-	1	-	-	23.0
Institutions for teacher training, total²	356	2	3	35	96	142	78	26.6
Higher colleges for teacher training	356	2	3	35	96	142	78	26.6

1 Schools for the medical services and schools with a statute of their own are not included.

2 Without schools for physical education teachers and sports instructors training (intermediate schools for teacher training).

Source: Statistics Austria – Education documentation, BMUKK calculations

Table 9:
Teaching staff by school type and federal province, school year 2008/09¹

Type of school ²	Austria, total		Burgenland		Carinthia		Lower Austria		Upper Austria	
	All	of which female	All	of which female	All	of which female	All	of which female	All	of which female
All mainstream schools	112,740	76,917	3,751	2,440	8,114	5,572	20,240	14,189	20,529	13,825
General schools, total	85,513	63,821	2,652	1,891	6,032	4,574	15,398	11,922	15,423	11,503
General compulsory schools, total	65,749	51,878	2,067	1,554	4,745	3,816	12,364	10,109	12,621	9,904
Primary schools	28,919	25,932	940	793	2,149	1,896	5,257	4,867	5,420	4,872
Lower secondary schools	28,599	19,746	957	650	2,072	1,516	5,495	3,974	6,071	4,253
Special (SEN) schools and classes	5,768	4,895	100	81	413	343	1,111	983	554	464
Pre-vocational schools	2,463	1,305	70	30	111	61	501	285	576	315
Academic secondary schools	19,764	11,943	585	337	1,287	758	3,034	1,813	2,802	1,599
Technical and vocational schools, post-secondary colleges, total	25,849	11,982	1,048	514	2,021	945	4,592	2,076	4,872	2,134
Vocational schools for apprentices ³	4,955	1,594	110	26	347	97	706	224	979	312
Technical and vocational schools and colleges, total	20,881	10,384	938	488	1,674	848	3,886	1,852	3,880	1,818
Technical and crafts schools and colleges (in a narrower sense)	7,838	1,856	297	58	570	131	1,383	261	1,545	335
Schools and colleges of tourism	1,190	619	90	64	50	22	198	100	187	87
Schools and colleges of business administration	5,357	3,330	315	193	407	256	936	589	878	516
Schools and colleges of management and the service industries ⁴	4,242	3,330	203	157	404	302	866	662	828	650
Schools and colleges for social professions	173	143	-	-	15	12	85	72	10	7
Schools and colleges for agriculture and forestry ⁵	2,081	1,106	33	16	228	125	418	168	432	223
Post-secondary vocational colleges	13	4	-	-	-	-	-	-	13	4
Institutions for teacher training, total	1,378	1,114	51	35	61	53	250	191	234	188
Higher colleges for teacher training	1,378	1,114	51	35	61	53	250	191	234	188

1 Not including staff on maternity or educational leave; including part-time staff („head count“).

In comparisons with previous years please note that figures published up to and including the school year 2007/08 included staff on leave.

2 Schools for the medical services, schools for physical education teachers and sports instructors training, as well as schools with a statute of their own are not included.

3 Not including teachers at schools for agriculture and forestry for apprentices.

4 Including teachers at schools of clothing and crafts.

5 Including teachers at schools for agriculture and forestry for apprentices.

Source: Statistics Austria, BMUKK

**Table 9 (continued):
Teaching staff by school type and federal province, school year 2008/09¹**

Type of school ²	Salzburg		Styria		Tyrol		Vorarlberg		Vienna	
	All	of which female	All	of which female	All	of which female	All	of which female	All	of which female
All mainstream schools	8,070	5,373	14,905	10,247	10,315	6,431	5,800	3,598	21,016	15,242
General schools, total	5,963	4,372	11,233	8,371	7,826	5,269	4,555	3,068	16,431	12,851
General compulsory schools, total	4,617	3,591	8,554	6,713	6,433	4,542	3,756	2,685	10,592	8,964
Primary schools	1,940	1,731	3,901	3,547	2,741	2,265	1,658	1,374	4,913	4,587
Lower secondary schools	2,043	1,399	4,026	2,724	2,963	1,795	1,594	952	3,378	2,483
Special (SEN) schools and classes	439	361	310	269	441	351	370	303	2,030	1,740
Pre-vocational schools	195	100	317	173	288	131	134	56	271	154
Academic secondary schools	1,346	781	2,679	1,658	1,393	727	799	383	5,839	3,887
Technical and vocational schools, post-secondary colleges, total	2,035	945	3,453	1,703	2,362	1,058	1,187	485	4,279	2,122
Vocational schools for apprentices ³	372	136	731	212	533	165	277	70	900	352
Technical and vocational schools and colleges, total	1,663	809	2,722	1,491	1,829	893	910	415	3,379	1,770
Technical and crafts schools and colleges (in a narrower sense)	523	107	924	225	611	134	315	62	1,670	543
Schools and colleges of tourism	141	65	52	19	197	104	68	34	207	124
Schools and colleges of business administration	395	243	692	452	509	278	286	149	939	654
Schools and colleges of management and the service industries ⁴	417	314	528	443	310	251	199	154	487	397
Schools and colleges for social professions	9	6	23	19	-	-	-	-	31	27
Schools and colleges for agriculture and forestry ⁵	178	74	503	333	202	126	42	16	45	25
Post-secondary vocational colleges	-	-	-	-	-	-	-	-	-	-
Institutions for teacher training, total	72	56	219	173	127	104	58	45	306	269
Higher colleges for teacher training	72	56	219	173	127	104	58	45	306	269

1 Not including staff on maternity or educational leave; including part-time staff („head count“).

In comparisons with previous years please note that figures published up to and including the school year 2007/08 included staff on leave.

2 Schools for the medical services, schools for physical education teachers and sports instructors training, as well as schools with a statute of their own are not included.

3 Not including teachers at schools for agriculture and forestry for apprentices.

4 Including teachers at schools of clothing and crafts.

5 Including teachers at schools for agriculture and forestry for apprentices.

Source: Statistics Austria, BMUKK

Table 10:
Recipients of student support and/or accommodation grants by support category,
type of school and federal province, school year 2007/08

Support category / Type of school ¹	Austria, total	Burgen- land	Carinthia	Lower Austria	Upper Austria	Salz- burg	Styria	Tyrol	Vorarl- berg	Vienna
All support categories and school types	31,164	903	2,999	6,861	6,369	2,233	4,916	3,422	751	2,710
Student support	19,100	709	1,777	4,055	3,772	996	2,899	1,806	566	2,520
Pre-vocational schools	1	-	-	-	-	-	-	-	-	1
Academic secondary schools	4,103	108	329	643	640	207	670	395	111	1,000
Technical and vocational schools and colleges	14,004	568	1,413	3,186	2,929	754	2,022	1,338	427	1,367
Institutions for teacher training	885	33	35	187	203	35	189	57	28	118
Schools for paramedical training	107	-	-	39	-	-	18	16	-	34
Accommodation grant	3,453	47	373	748	659	333	655	565	66	7
Pre-vocational schools	-	-	-	-	-	-	-	-	-	-
Academic secondary schools	53	2	3	14	6	6	9	12	-	1
Technical and vocational schools and colleges	3,352	43	370	723	645	321	643	536	65	6
Institutions for teacher training	47	2	-	11	8	6	3	16	1	-
Schools for paramedical training	1	-	-	-	-	-	-	1	-	-
Student support and accommodation grant combined	8,380	147	829	2,002	1,801	888	1,362	1,051	117	183
Pre-vocational schools	-	-	-	-	-	-	-	-	-	-
Academic secondary schools	296	7	19	63	29	32	62	73	1	10
Technical and vocational schools and colleges	7,747	109	779	1,853	1,728	845	1,255	911	116	151
Institutions for teacher training	302	31	31	79	44	11	38	59	-	9
Schools for paramedical training	35	-	-	7	-	-	7	8	-	13
Special student support²	231	-	20	56	137	16	-	-	2	-
Academic secondary schools	8	-	6	-	2	-	-	-	-	-
Technical and vocational schools and colleges	223	-	14	56	135	16	-	-	2	-

1 Including types for people in work.

2 Only automatically processed applications are shown here.

Source: BMUKK

Table 11:
Recipients of student support and/or accommodation grants: average (annual) amount of support in €
by support category, type of school and federal province, school year 2007/08

Support category / Type of school ¹	Austria, total	Burgen- land	Carinthia	Lower Austria	Upper Austria	Salz- burg	Styria	Tyrol	Vorarl- berg	Vienna
Average support, all categories	1,275	1,088	1,346	1,316	1,255	1,393	1,312	1,284	1,156	1,059
Student support	947	938	952	957	931	926	951	913	980	978
Pre-vocational schools	.	-	-	-	-	-	-	-	-	.
Academic secondary schools	963	989	948	972	939	935	972	910	922	1,000
Technical and vocational schools and colleges	941	927	953	952	930	919	942	912	1,001	953
Institutions for teacher training	942	958	929	971	933	930	919	912	882	982
Schools for paramedical training	1,146	-	-	1,005	-	-	1,430	1,028	-	1,212
Accommodation grant	1,236	1,087	1,252	1,247	1,247	1,175	1,255	1,237	1,131	1,264
Pre-vocational schools	-	-	-	-	-	-	-	-	-	-
Academic secondary schools	1,121	.	1,229	1,220	1,028	1,165	1,178	1,069	-	.
Technical and vocational schools and colleges	1,241	1,134	1,256	1,251	1,248	1,174	1,261	1,245	1,142	1,332
Institutions for teacher training	1,127	.	882	1,060	1,371	1,443	851	1,247	.	-
Schools for paramedical training	.	-	-	-	-	-	-	.	-	-
Student support and accommodation grant combined	2,242	2,015	2,416	2,294	2,158	2,233	2,272	2,106	2,237	2,447
Pre-vocational schools	-	-	-	-	-	-	-	-	-	-
Academic secondary schools	2,196	2,192	2,276	2,221	2,515	2,508	2,086	1,930	.	2,615
Technical and vocational schools and colleges	2,240	1,964	2,417	2,296	2,147	2,218	2,283	2,113	2,233	2,384
Institutions for teacher training	2,261	2,136	2,500	2,299	2,374	2,603	2,087	2,102	-	2,349
Schools for paramedical training	2,677	-	-	2,352	-	-	2,192	2,709	-	3,094
Special student support²	1,869	-	1,847	3,126	1,411	1,026	-	-	.	-
Academic secondary schools	2,417	-	2,943	-	.	-	-	-	-	-
Technical and vocational schools and colleges	1,849	-	1,377	3,126	1,420	1,026	-	-	.	-

1 Including types for people in work.

2 Calculation is based on automatically processed applications only.

Source: BMUKK

Table 12:
Students in graduation classes of upper secondary schools by school type and gender,
graduation years 1990, 2000, 2005, 2008 and 2009¹

Type of school		Graduation year				
		2009	2008	2005	2000	1990
All mainstream schools	All	42,781	41,868	38,802	37,796	31,744
	Females	24,098	23,596	21,695	21,269	16,651
	Males	18,683	18,272	17,107	16,527	15,093
Academic secondary schools, total	All	19,610	18,154	16,113	17,255	15,473
	Females	11,451	10,625	9,504	10,131	8,305
	Males	8,159	7,529	6,609	7,124	7,168
Academic secondary schools (full 8/9 year cycle) ²	All	13,660	12,707	11,348	12,348	11,024
	Females	7,756	7,183	6,557	6,980	5,820
	Males	5,904	5,524	4,791	5,368	5,204
Academic secondary schools, separate upper level	All	5,001	4,953	4,395	4,517	4,087
	Females	3,169	3,171	2,729	2,944	2,357
	Males	1,832	1,782	1,666	1,573	1,730
Academic secondary schools (special sub-types) ³	All	949	494	370	390	362
	Females	526	271	218	207	128
	Males	423	223	152	183	234
Technical and vocational colleges, total ⁴	All	21,649	22,252	21,322	18,955	15,411
	Females	11,166	11,554	10,846	9,599	7,505
	Males	10,483	10,698	10,476	9,356	7,906
Technical and crafts colleges ⁵	All	9,511	9,295	9,648	7,794	6,451
	Females	2,268	2,222	2,219	1,627	1,108
	Males	7,243	7,073	7,429	6,167	5,343
Colleges of business administration	All	6,573	7,432	6,843	6,741	6,040
	Females	4,114	4,579	4,458	4,103	3,849
	Males	2,459	2,853	2,385	2,638	2,191
Colleges of management and service industries	All	4,854	4,798	4,158	3,796	2,402
	Females	4,484	4,437	3,904	3,599	2,390
	Males	370	361	254	197	12
Colleges of agriculture and forestry	All	711	727	673	624	518
	Females	300	316	265	270	158
	Males	411	411	408	354	360
Higher colleges for teacher training ⁶	All	1,522	1,462	1,367	1,586	860
	Females	1,481	1,417	1,345	1,539	841
	Males	41	45	22	47	19

1 Austrian and foreign students in graduation classes of secondary schools with "Matura" secondary school leaving certificate, without VET courses; data as at October of previous year. 2005: students in graduation classes, preliminary figures.

2 Academic secondary schools and secondary schools of management and the service industries.

3 Add-on academic secondary schools and academic secondary schools for people in work.

4 Including special types (for people in employment, add-on courses).

5 Including colleges of tourism and colleges of the clothing trades.

6 Nursery teacher training institutions and institutions for social pedagogy.

Source: Statistics Austria – Education documentation, BMUKK calculations

Table 13:
University Colleges of Teacher Education: students and new entrants, winter term 2008/09

Study programme / institution	Winter term 2008/09					
	Students			of which new entrants		
	all	females	males	all	females	males
Teacher training at public and private University Colleges of Teacher Education and in private study programmes, total	7,928	6,297	1,631	2,988	2,269	719
Teacher training for primary school teachers	3,052	2,820	232	1,070	989	81
Teacher training for lower secondary school teachers	1,851	1,321	530	636	456	180
Teacher training for special (SEN) school teachers	996	899	97	420	373	47
Teacher training for pre-vocational school teachers	12	7	5	12	7	5
Teacher training for teachers at vocational schools for apprentices	599	223	376	370	142	228
Teacher training for occupation-specific instruction at VET S&C	687	428	259	302	168	134
Teacher training for religious education at compulsory schools	731	599	132	178	134	44
Public University Colleges of Teacher Education, total	5,103	3,861	1,242	1,986	1,406	580
University College of Teacher Education Carinthia	204	173	31	95	80	15
University College of Teacher Education Lower Austria	415	362	53	168	148	20
University College of Teacher Education Upper Austria	728	510	218	251	140	111
University College of Teacher Education Salzburg	562	486	76	178	156	22
University College of Teacher Education Styria	964	669	295	322	211	111
University College of Teacher Education Tyrol	551	380	171	231	142	89
University College of Teacher Education Vorarlberg	363	314	49	116	96	20
University College of Teacher Education Vienna	1,133	837	296	517	355	162
Vienna University College of TE – agriculture and environment	183	130	53	108	78	30
Private University Colleges of TE and study programmes, total	2,825	2,436	389	1,002	863	139
Private University Colleges of Teacher Education	2,606	2,276	330	946	826	120
University College of Teacher Education Burgenland Foundation	124	120	4	70	68	2
University College of Teacher Education of the Diocese of Linz	724	634	90	240	207	33
University College of TE of the Diocese of Graz-Seckau Foundation	259	226	33	103	90	13
University College of TE – Diocese of Innsbruck Foundation	274	223	51	87	73	14
University College of TE – Archdiocese of Vienna Foundation	1,225	1,073	152	446	388	58
Private study programmes for teacher training	219	160	59	56	37	19
Religious education (Catholic) at compulsory schools, Klagenfurt	47	39	8	11	9	2
Religious education (Jewish) at compulsory schools, Vienna	56	52	4	17	14	3
Religious education (Islamic) at compulsory schools, Vienna	116	69	47	28	14	14

VET S&C – vocational education and training schools and colleges

TE – Teacher Education

Source: Statistics Austria

Table 14:
University Colleges of Teacher Education: new entrants and graduates, academic year 2007/08

Study programme / institution	Academic year 2007/08					
	New entrants			Graduates		
	all	females	males	all	females	males
Teacher training at public and private University Colleges of Teacher Education and in private study programmes, total	2,502	1,995	507	1,053	799	254
Teacher training for primary school teachers	995	917	78	342	319	23
Teacher training for lower secondary school teachers	614	450	164	261	197	64
Teacher training for special (SEN) school teachers	312	286	26	110	101	9
Teacher training for pre-vocational school teachers	-	-	-	-	-	-
Teacher training for teachers at vocational schools for apprentices	198	79	119	107	34	73
Teacher training for occupation-specific instruction at VET S&C	165	98	67	118	49	69
Teacher training for religious education at compulsory schools	218	165	53	115	99	16
Public University Colleges of Teacher Education, total	1,571	1,207	364	642	435	207
University College of Teacher Education Carinthia	57	52	5	10	8	2
University College of Teacher Education Lower Austria	195	170	25	32	29	3
University College of Teacher Education Upper Austria	240	162	78	179	137	42
University College of Teacher Education Salzburg	161	140	21	22	20	2
University College of Teacher Education Styria	271	191	80	159	113	46
University College of Teacher Education Tyrol	165	130	35	74	43	31
University College of Teacher Education Vorarlberg	72	61	11	12	8	4
University College of Teacher Education Vienna	409	301	108	133	62	71
Vienna University College of TE – agriculture and environment	1	-	1	21	15	6
Private University Colleges of TE and study programmes, total	931	788	143	411	364	47
Private University Colleges of Teacher Education	854	733	121	361	322	39
University College of Teacher Education Burgenland Foundation	33	27	6	6	6	-
University College of Teacher Education of the Diocese of Linz	244	221	23	189	169	20
University College of TE of the Diocese of Graz-Seckau Foundation	85	72	13	45	40	5
University College of TE – Diocese of Innsbruck Foundation	50	37	13	19	17	2
University College of TE – Archdiocese of Vienna Foundation	442	376	66	102	90	12
Private study programmes for teacher training	77	55	22	50	42	8
Religious education (Catholic) at compulsory schools, Klagenfurt	10	9	1	9	8	1
Religious education (Jewish) at compulsory schools, Vienna	15	15	-	14	14	-
Religious education (Islamic) at compulsory schools, Vienna	52	31	21	27	20	7

VET S&C – vocational education and training schools and colleges

TE – Teacher Education

Source: Statistics Austria

Table 15:
University Colleges of Teacher Education: students and new entrants, winter term 2007/08

Study programme / institution	Winter term 2007/08					
	Students			of which new entrants		
	all	females	males	all	females	males
Teacher training at public and private University Colleges of Teacher Education and in private study programmes, total	6,779	5,416	1,363	2,300	1,835	465
Teacher training for primary school teachers	2,572	2,359	213	915	844	71
Teacher training for lower secondary school teachers	1,735	1,232	503	559	405	154
Teacher training for special (SEN) school teachers	827	744	83	284	259	25
Teacher training for pre-vocational school teachers	-	-	-	-	-	-
Teacher training for teachers at vocational schools for apprentices	381	140	241	180	71	109
Teacher training for occupation-specific instruction at VET S&C	534	330	204	156	96	60
Teacher training for religious education at compulsory schools	730	611	119	206	160	46
Public University Colleges of Teacher Education, total	4,288	3,287	1,001	1,463	1,126	337
University College of Teacher Education Carinthia	151	124	27	54	49	5
University College of Teacher Education Lower Austria	349	304	45	186	162	24
University College of Teacher Education Upper Austria	748	554	194	232	157	75
University College of Teacher Education Salzburg	454	388	66	154	134	20
University College of Teacher Education Styria	854	620	234	233	167	66
University College of Teacher Education Tyrol	466	346	120	162	127	35
University College of Teacher Education Vorarlberg	258	223	35	71	60	11
University College of Teacher Education Vienna	908	659	249	371	270	101
Vienna University College of TE – agriculture and environment	100	69	31	-	-	-
Private University Colleges of TE and study programmes, total	2,491	2,129	362	837	709	128
Private University Colleges of Teacher Education	2,266	1,958	308	760	654	106
University College of Teacher Education Burgenland Foundation	81	73	8	31	25	6
University College of Teacher Education of the Diocese of Linz	716	634	82	227	205	22
University College of TE of the Diocese of Graz-Seckau Foundation	236	206	30	72	63	9
University College of TE – Diocese of Innsbruck Foundation	247	196	51	44	33	11
University College of TE – Archdiocese of Vienna Foundation	986	849	137	386	328	58
Private study programmes for teacher training	225	171	54	77	55	22
Religious education (Catholic) at compulsory schools, Klagenfurt	52	43	9	10	9	1
Religious education (Jewish) at compulsory schools, Vienna	40	40	-	15	15	-
Religious education (Islamic) at compulsory schools, Vienna	133	88	45	52	31	21

VET S&C – vocational education and training schools and colleges

TE – Teacher Education

Source: Statistics Austria

Table 16:
Reference levels of European average performance (*Benchmarks*) in education and training, 2008

Early school leavers

By 2010, an EU average rate of no more than 10% early school leavers should be achieved.

	2000	2008	EU rank
Average EU-27	17.6%	14.9%	
Austria	10.2%	10.1%	7 (of 27)

Note: Definition „early school leavers“: Share of the population aged 18–24 with only lower secondary education and not in education or training.

Completion of upper secondary education

By 2010, at least 85% of 22 year olds in the EU should have completed upper secondary education.

	2000	2008	EU rank
Average EU-27	76.6%	78.5%	
Austria	85.1%	84.5%	10 (of 27)

Note: Data refer to the percentage of the 20 to 24 year old population having completed at least upper secondary education.

Graduations in mathematics, science and technology

By 2010, the total number of graduates in mathematics, science and technology (MST) should increase by at least 15% as compared to 2000 while, at the same time, the level of gender imbalance should decrease.

	2000	2007	EU rank
EU-27, total	686,000	917,000	
Austria	7,500	11,600	10 (of 25)

Note: Number of tertiary graduates in MST; calculation of the rank within the EU is based on growth rates.

Adults' participation in lifelong learning

By 2010, the EU average level of adults' participation in lifelong learning, should be at least 12.5%.

	2000	2008	EU rank
Average EU-27	7.1%	9.5%	
Austria	8.3%	13.2%	7 (of 27)

Note: Data refer to the percentage of the population aged 25-64 participating in formal or non-formal education and training programmes within four weeks prior to the survey.

Key competences

By 2010, the percentage of low-achieving 15 year olds in reading literacy in the EU should have decreased by at least 20% compared to the year 2000.

	2000	2006	EU rank
Average EU-27	21.3%	24.1%	
Austria	19.3%	21.5%	14 (of 25)

Note: Data refer to the percentage of 15 year old pupils with reading literacy proficiency level 1 and lower in the PISA reading literacy scale.

Source: European Commission

Table 17:
Adult education: number of events and participation, calendar year 2008 and academic year 2007/08, respectively

		Short events 1 – 4 TU ¹	Courses	Total	Special courses / events
Platform Educational Institutions in Austria	Events	4,760	10,304	15,064	2,084
	Participation	115,053	225,779	340,832	25,415
„bfi“ Vocational Training Institute	Events	n.a. ²	16,011	16,011	43
	Participation	n.a. ²	177,135	177,135	8,830
Austrian Library Association	Events	16,772	.	16,772	n.a. ²
	Borrowings ³	.	.	20,323,775	.
	Visitors	.	.	10,315,137	.
	Users ⁴	.	.	1,104,345	.
Catholic Adult Education Institutions	Events	22,948	9,252	32,200	6,211
	Participation	446,496	146,086	592,582	278,555
Institute for Adult Education in Rural Areas	Events	7,639	5,864	13,503	738
	Participation	195,798	136,877	332,675	91,329
Federation of Austrian Educational Associations	Events	8,740	4,215	12,955	7,429
	Participation	223,594	107,985	331,579	890,674
Austrian National Economy Society	Events	1,068	1,633	2,701	120
	Participation	27,405	28,350	55,755	7,850
Austrian Trade Union Education Network	Events	4,352	4,179	8,531	1,374
	Participation	102,533	59,341	161,874	123,660
Association of Austrian Adult Education Centres	Events	2,988	47,113	50,101	3,110
	Participation	80,305	455,382	535,687	187,377
Institute for Economic Promotion of the Austrian Federal Economic Chamber	Events	n.a. ²	n.a. ²	28,486	n.a. ²
	Participation	n.a. ²	n.a. ²	314,943	n.a. ²
Total ⁵	Events	69,267	98,571	196,324	21,109
	Participation	1,191,184	1,336,935	2,843,062	1,613,690

1 TU = Teaching unit.

2 Not available.

3 Borrowings of books and other media.

4 Registered users.

5 Sum total without borrowings, visitors and users of the Austrian Library Association.

Source: Austrian Conference on Adult Education (KEBÖ)

Table 18:
Adults' participation in lifelong learning: Population of 15 years and older by participation in training and continuing education; type, purpose and hours by age and gender, 2008¹

Age (years)	Total			Courses attended			Average number of hours within four weeks prior to survey ³		EU structural indicator "lifelong learning" ⁴
	Thousands	of which in education / training (formal and/or non-formal) ²		Thousands	of which predominantly job-related	of which predominantly private	Total	of which in predominantly job-related courses	
		Thousands	%						
All									
Total	6,951.8	1,266.3	18.2	636.1	340.6	295.5	18.0	22.9	13.2
15 – 19	487.2	419.0	86.0	63.9	15.8	48.1	19.4	34.3	.
20 – 29	1,047.4	346.5	33.1	130.6	74.6	56.0	22.9	28.7	25.6
30 – 39	1,179.2	190.0	16.1	150.7	94.1	56.6	18.6	22.6	16.0
40 – 49	1,378.1	171.3	12.4	157.2	101.3	55.9	16.9	20.2	12.4
50 – 59	1,045.7	86.2	8.2	82.7	49.7	33.1	14.6	17.4	8.2
60 and older	1,814.2	53.3	2.9	51.0	(5.1)	46.0	10.3	15.1	4.6
25 – 64	4,582.5	608.6	13.3	481.6	291.2	190.3	17.7	21.7	13.2
Females									
Females total	3,600.1	673.0	18.7	348.6	161.7	186.9	15.8	21.8	14.2
15 – 19	243.2	208.6	85.8	31.4	8.6	22.8	18.4	32.1	.
20 – 29	525.6	187.7	35.7	72.2	38.6	33.6	19.5	25.2	26.6
30 – 39	591.5	100.7	17.0	80.1	42.2	37.9	16.0	21.1	16.9
40 – 49	682.6	94.3	13.8	86.4	49.0	37.4	15.6	20.2	13.8
50 – 59	530.6	48.2	9.1	46.1	22.2	23.9	13.0	16.7	9.1
60 and older	1,026.7	33.4	3.3	32.3	(1.1)	31.2	9.0	16.5	5.1
25 – 64	2,302.0	328.3	14.3	263.9	135.8	128.1	15.9	21.0	14.2
Males									
Males total	3,351.6	593.3	17.7	287.5	178.9	108.7	20.6	24.0	12.2
15 – 19	244.0	210.3	86.2	32.5	7.2	25.3	20.3	37.0	.
20 – 29	521.8	158.8	30.4	58.3	36.0	22.4	27.1	32.4	24.5
30 – 39	587.7	89.4	15.2	70.6	51.9	18.6	21.6	23.8	15.1
40 – 49	695.5	77.0	11.1	70.8	52.3	18.5	18.5	20.3	11.1
50 – 59	515.0	38.0	7.4	36.6	27.4	9.2	16.7	18.0	7.4
60 and older	787.6	19.9	2.5	18.7	(4.0)	14.8	12.5	14.8	4.0
25 – 64	2,280.5	280.3	12.3	217.7	155.5	62.2	20.0	22.4	12.2

1 Extrapolated figures. On account of the sample error, values less than 6,000 are inaccurate and cannot be interpreted statistically; they are put in parentheses.

2 Adults' participation in training and continuing education within four weeks prior to the survey;
 formal education: school and higher education system (including apprenticeship); non-formal education: courses and training.

3 Refers to participants.

4 Percentage of the population aged 25 to 64 years participating in training and continuing education programmes (not including persons who interrupt attendance at school or higher education institution on account of holidays).

Source: Statistics Austria – Microcensus / Labour Force Survey

Table 19:
Labour force aged 25 to 64 years participating in continuing education by federal province and purpose of continuing education, 2008¹

Participation in continuing education	Austria, total	Burgenland	Carinthia	Lower Austria	Upper Austria	Salzburg	Styria	Tyrol	Vorarlberg	Vienna
	Thousands									
All	3,464.7	118.6	223.0	674.8	592.0	231.8	495.0	296.0	152.1	681.3
Numbers	406.4	11.2	24.4	78.0	73.8	27.8	52.0	34.2	19.2	85.7
%	11.7%	9.5%	11.0%	11.6%	12.5%	12.0%	10.5%	11.6%	12.6%	12.6%
predominantly job-related	259.4	8.3	16.5	51.0	47.1	17.6	34.0	22.6	11.8	50.7
predominantly private	147.0	3.0	8.0	27.0	26.7	10.2	18.0	11.6	7.5	35.0
Females	1,581.6	53.3	101.1	308.8	267.0	108.4	221.7	135.2	67.5	318.5
Numbers	212.8	5.4	12.0	39.5	36.0	15.3	27.0	17.9	9.6	50.1
%	13.5%	10.2%	11.9%	12.8%	13.5%	14.1%	12.2%	13.3%	14.1%	15.7%
predominantly job-related	117.8	3.6	7.0	22.6	18.6	7.8	15.6	10.4	4.7	27.6
predominantly private	95.0	(1.9)	5.0	16.9	17.4	7.6	11.4	7.6	4.9	22.5
Males	1,883.2	65.3	121.9	366.0	325.0	123.4	273.3	160.8	84.6	362.8
Numbers	193.6	5.8	12.4	38.5	37.9	12.5	25.0	16.3	9.7	35.6
%	10.3%	8.9%	10.2%	10.5%	11.6%	10.1%	9.1%	10.1%	11.4%	9.8%
predominantly job-related	141.6	4.7	9.4	28.4	28.5	9.8	18.4	12.2	7.1	23.1
predominantly private	52.0	(1.1)	3.0	10.1	9.3	(2.7)	6.6	4.1	2.6	12.5

¹ Extrapolated figures. Values that are inaccurate on account of the sample error are put in parentheses.

Source: Statistics Austria – Microcensus / Labour Force Survey

